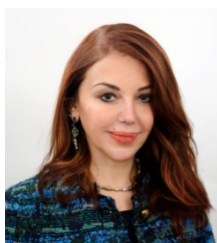


Scientific Speed Dating: CV form for mentors

First & Last name:

Vana Spoulou MD, MPhil, PhD

Professor Paediatric Infectious Diseases



Affiliation: *National and Kapodistrian University of Athens (NKUA) & "Agia Sophia" Children's Hospital, Athens, Greece*

Career in brief (please specify only the principal steps):

Professor of Paediatric Infectious Diseases, 1st Dept of Paediatrics, NKUA

Honorary Consultant, Head of the Infectious Diseases Dept and the National Reference Centre for Paediatric HIV, at "Aghia Sophia" Children's Hospital, Athens, Greece

Head of the Immunobiology and Vaccinology Research Lab, NKUA involved in the study of Host-Pathogen Interactions and Vaccine Research.

Main field of expertise (max 3 topics of interest):

- Paediatric Infectious Diseases
- Vaccinology
- Immunology

Personal statements about myself:

I have been actively engaged in vaccinology since 1992, with a career spanning translational research, clinical trials, education, and policy guidance. I established and

lead the **Immunobiology Research Laboratory** at “Agia Sophia” Children’s Hospital in Athens. The lab is nationally and internationally recognized for its work in **host-pathogen interactions and vaccine-induced immunity**, particularly against *Streptococcus pneumoniae*, *Haemophilus influenzae* type b, and *Neisseria meningitidis*. Our team combines **immunological profiling (ELISA, ELISPOT, FACS)** with participation in **clinical trials** to define correlates of protection in both healthy and immunocompromised pediatric populations.

We have extensive experience in **multi-center, international vaccine trials**, collaborating with academic institutions and industry partners. A particular strength of our work is the assessment of **vaccine-induced B cell immunological memory**, especially in vulnerable groups such as HIV-infected children, transplant recipients, oncology patients, and preterm infants. For that reason, we have developed a novel method for identification on antigen-specific B memory cells that predict the duration of protection induced by vaccination.

My lab pioneered in the identification of novel antigens and developed a **patented peptide-based pneumococcal vaccine** (V212) which has recently been tested in humans (<https://clinicaltrials.gov/study/NCT06975319>).

I also oversee a specialized vaccine outpatient clinic that provides tailored immunization plans for high-risk pediatric patients. This role highlights not only my clinical expertise but also my capacity to bridge research and clinical aspects of vaccinology.