

ESCMID study group on Lyme  
Borreliosis

**Lyme Borreliosis**  
is a tick-borne infectious disease  
**ESGBOR** works on guidelines for Lyme borreliosis,  
facilitates research and  
organise thematic meetings



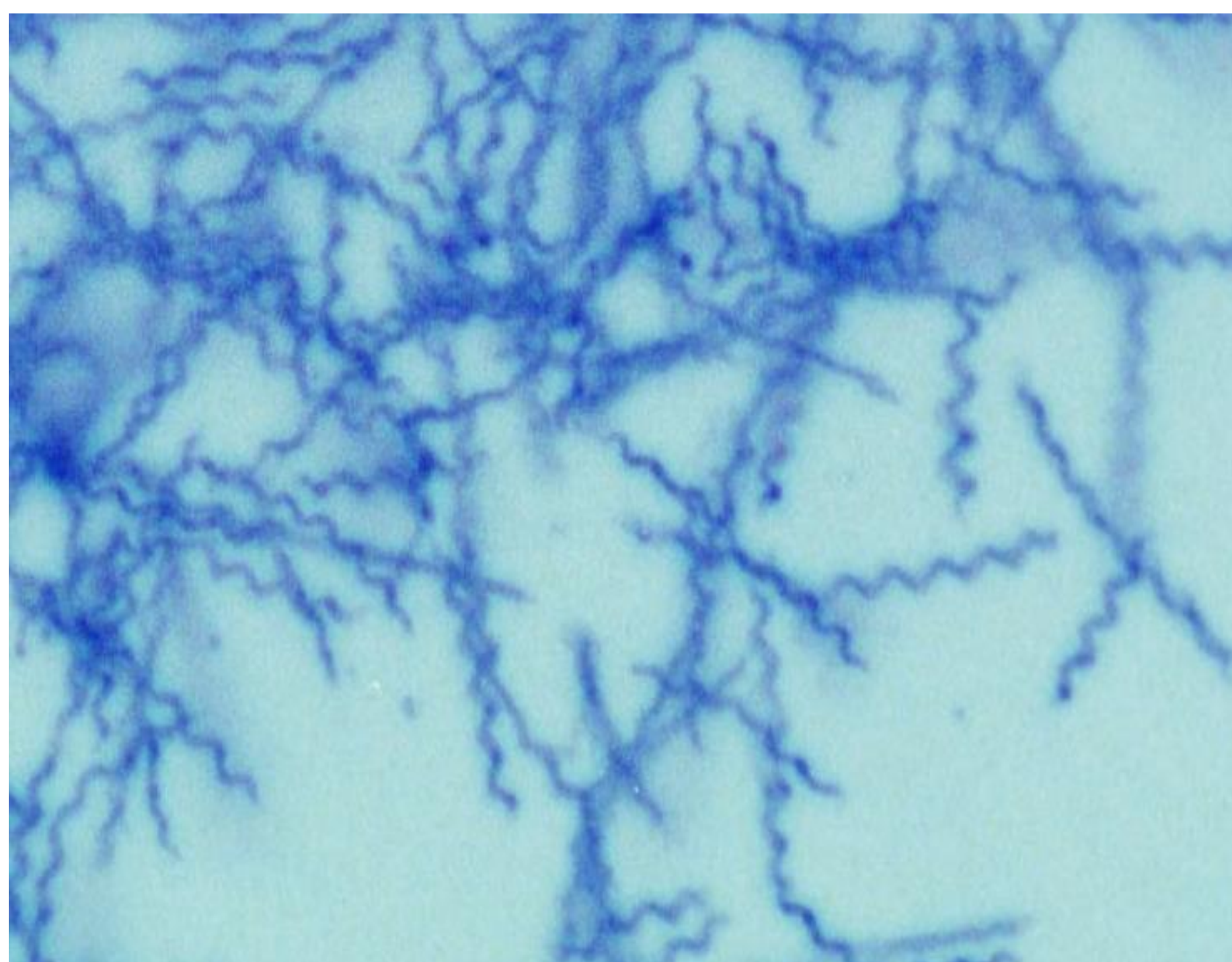
**Erythema migrans**



**Erythema migrans**



**feeding adult tick**



***Borrelia burgdorferi*** sensu lato



**Lyme Neuroborreliosis**

For more information **you** may visit  
[www.escmid.org/esgbor](http://www.escmid.org/esgbor) or contact  
[ramd@regionsjaelland.dk](mailto:ramd@regionsjaelland.dk)

Executive committee: Chairman Ram Dessau, Secretary Tobias Rupprecht, Treasurer Gerold Stanek  
Publications:

Lyme borreliosis: Clinical case definitions for diagnosis and management in Europe. CMI 2011;17:69-79

To test or not to test? Laboratory support for the diagnosis of Lyme borreliosis: a position paper of  
ESGBOR, the ESCMID study group for Lyme borreliosis. CMI 2017;24:118-124.