

COMBATting BACTERIAL RESISTANCE IN EUROPE

COMBACTE LAB-Net

What is COMBACTE?

The COMBACTE project is one of the seven projects part of the "New Drugs For Bad Bugs" (ND4BB) programme. COMBACTE is an EU-initiated consortium of industry and academic partners, formed to combat bacterial resistance and to develop new antibiotics against multi-resistant pathogens.

Project start: January 2013
Project duration: 7 years

What is COMBACTE LAB-Net?

LAB-Net is the Laboratory Network within COMBACTE. The network consists of routine, diagnostic laboratories, microbiology research specialized laboratories, and a highly qualified central laboratory. LAB-Net is supported by 'state-of-the-art' laboratory investigators needed to underpin the development of optimal diagnostics in the different clinical trials. This network is fully complementary to COMBACTE CLIN-Net and closely linked with the clinical studies.

Main Achievements of COMBACTE LAB-Net since 2013

- 606 members of 480 laboratories serving 595 hospitals in 40 countries
- Development and launch of a LAB-Net baseline questionnaire, assessing the quality of the laboratories, their capability to participate in a clinical trial, and the laboratories' needs for capacity building and training.
- 6 study tailored questionnaires used for site selection in clinical studies reaching out to 369 sites.
- Collect data on methods for detection of carbapenem-resistant Gram-negatives used in daily practice in diagnostic laboratories.
- Preparation and organization of three training programmes (Pristina, Kosovo* in 2013, Skopje, Macedonia in 2014 and Belgrade, Serbia in 2015) for laboratories in several Balkan countries: Albania, Bulgaria, Croatia, Bosnia and Herzegovina, Greece, Kosovo*, Macedonia, Montenegro, Romania and Serbia.
- Establishment of a laboratory network in the Western Balkans within LAB-Net and sustainable collaboration with laboratories in the region in the framework of the upcoming COMBACTE clinical trials.
- Extensive support and contact with labs in the LAB-Net network, in writing laboratory and research manuals and providing laboratory expertise for clinical trials (ASPIRE-ICU, ASPIRE-SSI, EVADE, EURECA, REJUVENATE, SAATELLITE).

CONTACT INFORMATION:

LAB-Net program management office:
University of Antwerp, Campus Drie Eiken,
Universiteitsplein 1, S. 620
2610 Wilrijk, Belgium
combacte.lab-net@uantwerpen.be

Academic Lead: Herman Goossens
EFPIA Co-lead: Alexey Ruzin, AstraZeneca/Medimmune

Christine Lammens
christine.lammens@uantwerpen.be
Tomislav Kostyanov
tomislav.kostyanov@uantwerpen.be

*According to the United Nations Security Council resolution 1244/99 and the International Court of Justice Opinion on the Kosovo declaration of independence.

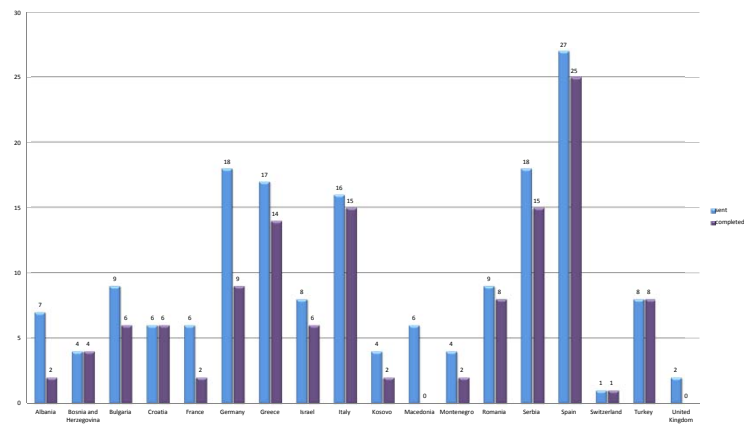


Fig. 1. Distribution of sent and completed LAB-Net questionnaires on detection of carbapenem-resistant Gram-negatives among laboratories in the COMBACTE network.

COMBACTE LAB-Net Questionnaire on Detection of Carbapenem-resistant Gram-negatives

LAB-Net developed a questionnaire in 2015 to screen the detection methods used in laboratories in terms of detection of carbapenem-resistant Gram-negatives. The questionnaire was sent to 170 laboratories in 18 COMBACTE countries in between June and December 2015 (Fig. 1). Data was collected from 125 laboratories (Fig. 2).

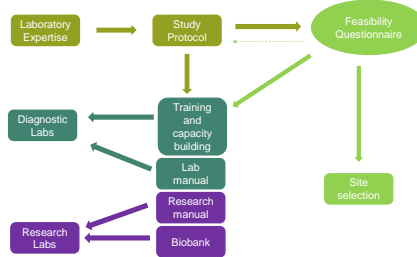


Fig. 3. Schema of the algorithm of LAB-Net for its involvement in clinical trials.

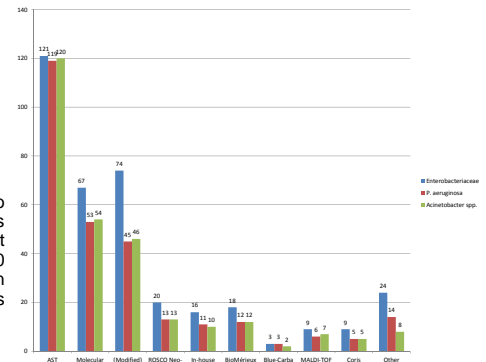


Fig. 2. Methods for detection of carbapenem-resistant Gram-negatives used in 125 labs that participated in the survey.

Upcoming COMBACTE LAB-Net Activities in 2016

- Preparation and distribution of external quality assessment panels to assess the performance of labs to participate in clinical trials.
- Prepare and conduct GCLP training for local laboratories.
- Meeting with diagnostic companies at ECCMID 2016.
- Preparation and organization of the 4th LAB-Net workshop on antimicrobial resistance for the Balkan countries.
- Selecting laboratories for participation in observational and interventional clinical trials.
- Providing laboratory expertise to labs involved in studies.

Visit us at booth 37A in the exhibition hall.

www.combacte.com | info@combacte.com